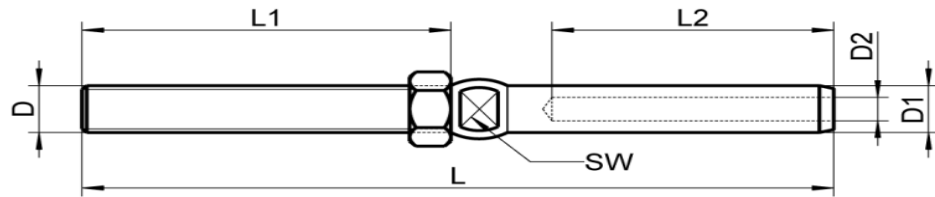




M8620

Terminali a pressare filetto sinistro, aisi 316 / A4

Swage stud terminal left thread, aisi 316 / A4



Codice Articolo Item Number	cavo (mm) wire rope (mm)	D1 (mm)	D2 (mm)	D (mm)	L1 (mm)	L2 (mm)	L (mm)	CH SW	 Box	 Master carton
M8620-4-3	3	6,5	3,2	M 6	48	39	100	5	10	400
M8620-4-4	4	7,5	4,3	M 8	57	45	117	6	10	200
M8620-4-5	5	9	5,3	M10	63	52	130	7	5	100
M8620-4-6	6	12,5	6,4	M12	80	64	162	10	5	50
M8620-4-8	8	16	8,4	M16	100	80	200	14	5	30



Attenzione!!! Le caratteristiche tecniche sopra riportate, sono puramente indicative e possono subire variazioni da lotto a lotto, a seconda della produzione.

Pay attention!! The dimensions shown in the data sheets are subject to minimal variations (different production line batch).

last edit 20/07/2020

DRAWING N. 1158